

Opening May 2021



**Life  
Science  
Incubator**  
Space for Science

In conversation with



A modern,  
flexible,  
fully-fitted  
**Biosafety Level 2**  
**co-working laboratory**

located in the heart of  
Singapore's scientific  
hub

# Our mission is to support and facilitate start-ups in Singapore...

We want to attract and assist both **local** and **international** startups by creating a space that is **accessible, affordable, flexible** and conducive to groundbreaking **innovation**.

## ...And to create a living showroom for leading equipment and technology partners

A platform where brands can **exhibit** and **engage** with new and potential **customers**, visit for training and sales events and cultivate a pipeline of loyal customers.

**A showroom; within a living and thriving life science eco-system.**



**Life  
Science  
Incubator**  
Space for Science



We provide an approachable and affordable soft-landing for start-ups who want to continue fine tuning their products, to acquire their first customers, to secure more funding and to take the next step. We take care of the operational and investment burdens - so you can focus on the science.



A **soft landing** as a next step after graduating from your incubation programme



Access to a suite of **cutting edge equipment** from leading global manufacturers



Access to a network of relevant and receptive **Venture Capitalist Funds**



An **affordable and flexible** space that they can grow within - and graduate from



Support from a dedicated **technical and commercial team**





# Positioned for Success

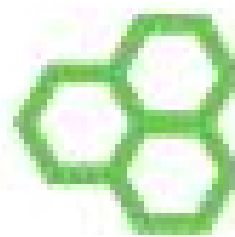


LSI is located at **the heart of Singapore's biotech, pharma, maritime, infrastructure and tech hubs** while also being a short commute from both of the main Singaporean universities NUS and NTU

- Just 6KM from NUS (10 minute drive or 20 minute commute on Public transport)
- And 7KM from Biopolis (10 min drive or 25 minute commute)

LSI is embedded within the Singaporean Life Sciences community, but being located in the German centre adds another dimension which creates a **Gateway to Europe** for our members.

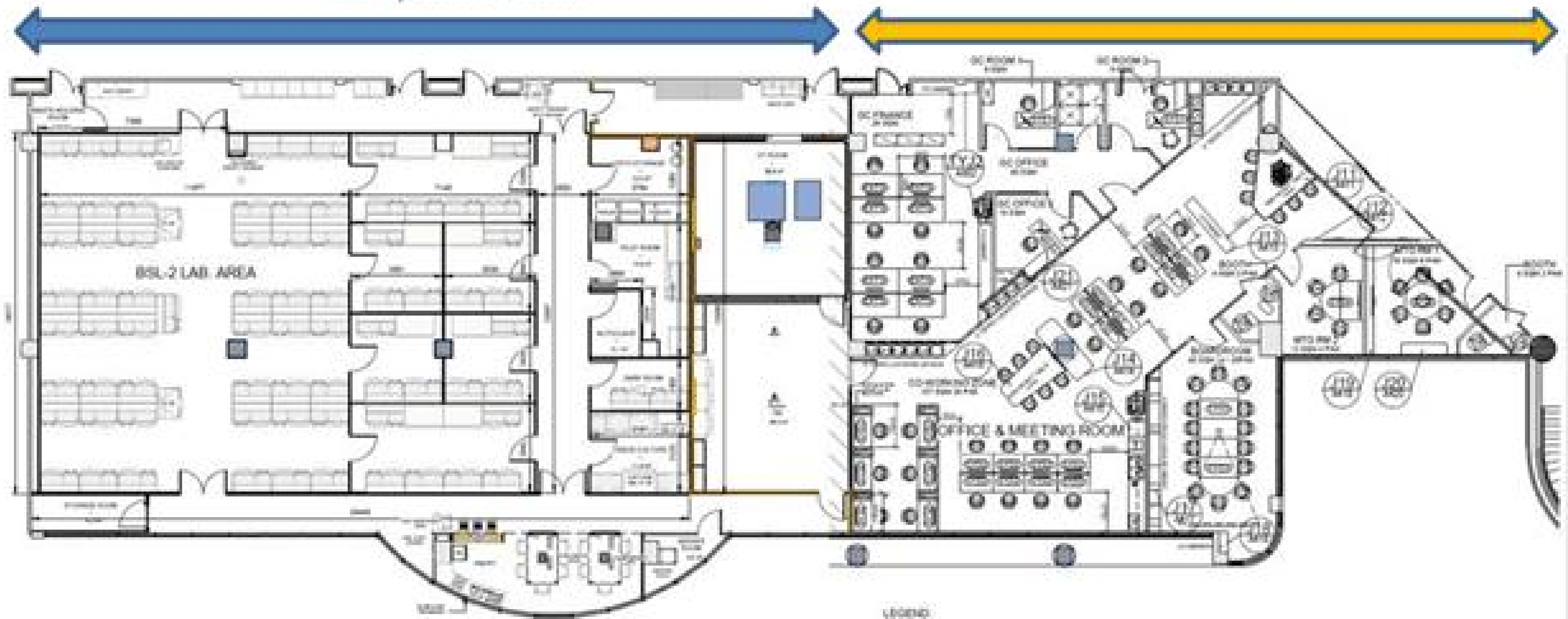
# THE SPACE



**Life  
Science  
Incubator**  
Space for Science



**GERMAN CENTRE**  
FOR INDUSTRY AND TRADE  
**SINGAPORE**





Flexible and  
affordable  
**LAB BENCHES AND  
SUITES**  
state-of-the-art  
**SUPPORT ROOMS**



Pilot Plant



Autoclave

Tissue Culture Room

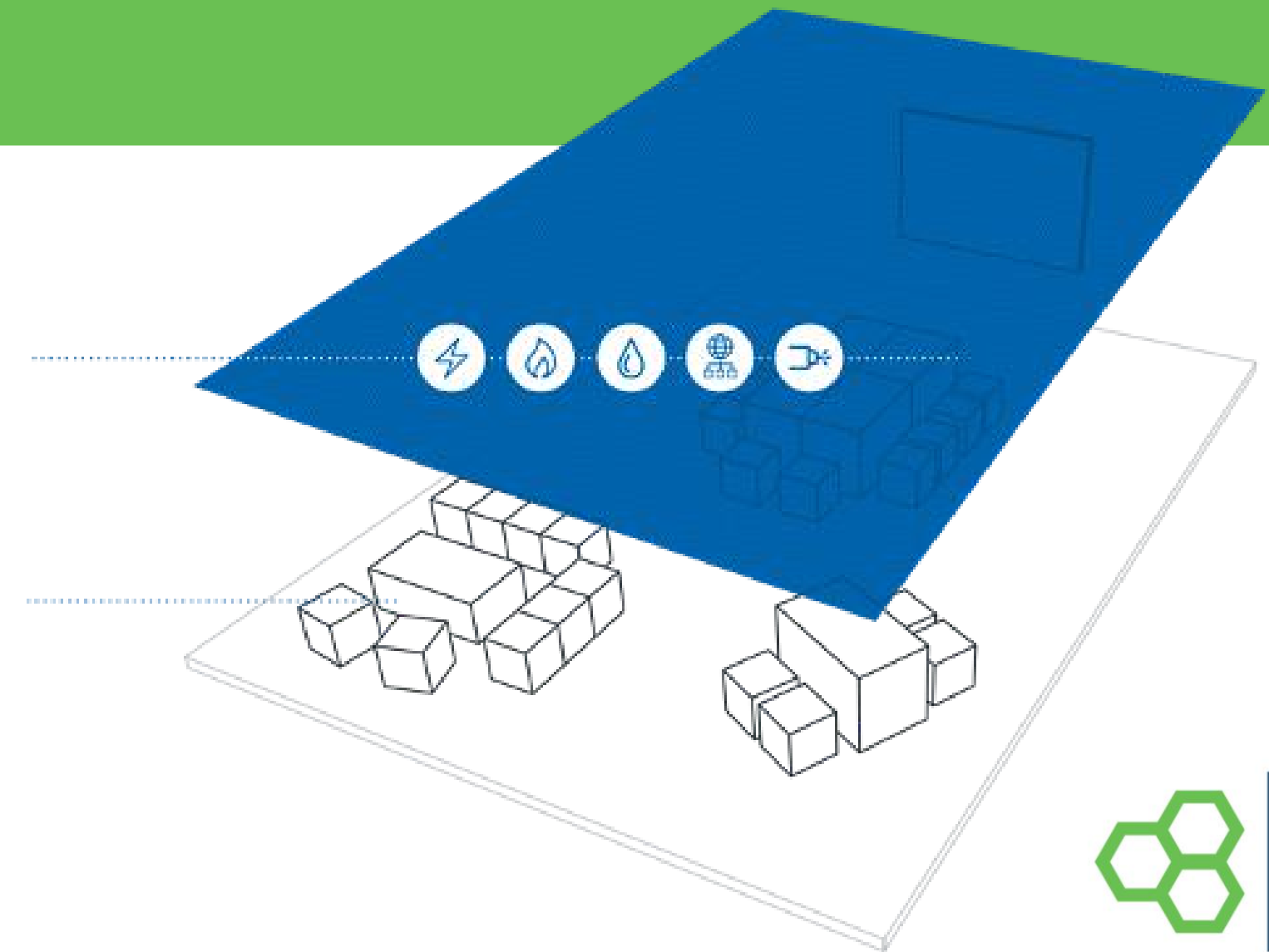


Cryo Storage



**Life  
Science  
Incubator**  
Space for Science

As well as a fully flexible  
**MAKERSPACE**  
for training, exhibition  
and team events



**Life  
Science  
Incubator**  
Space for Science

LSI will also offer an  
**OPERATING THEATRE**  
for hands-on training and  
market validation.

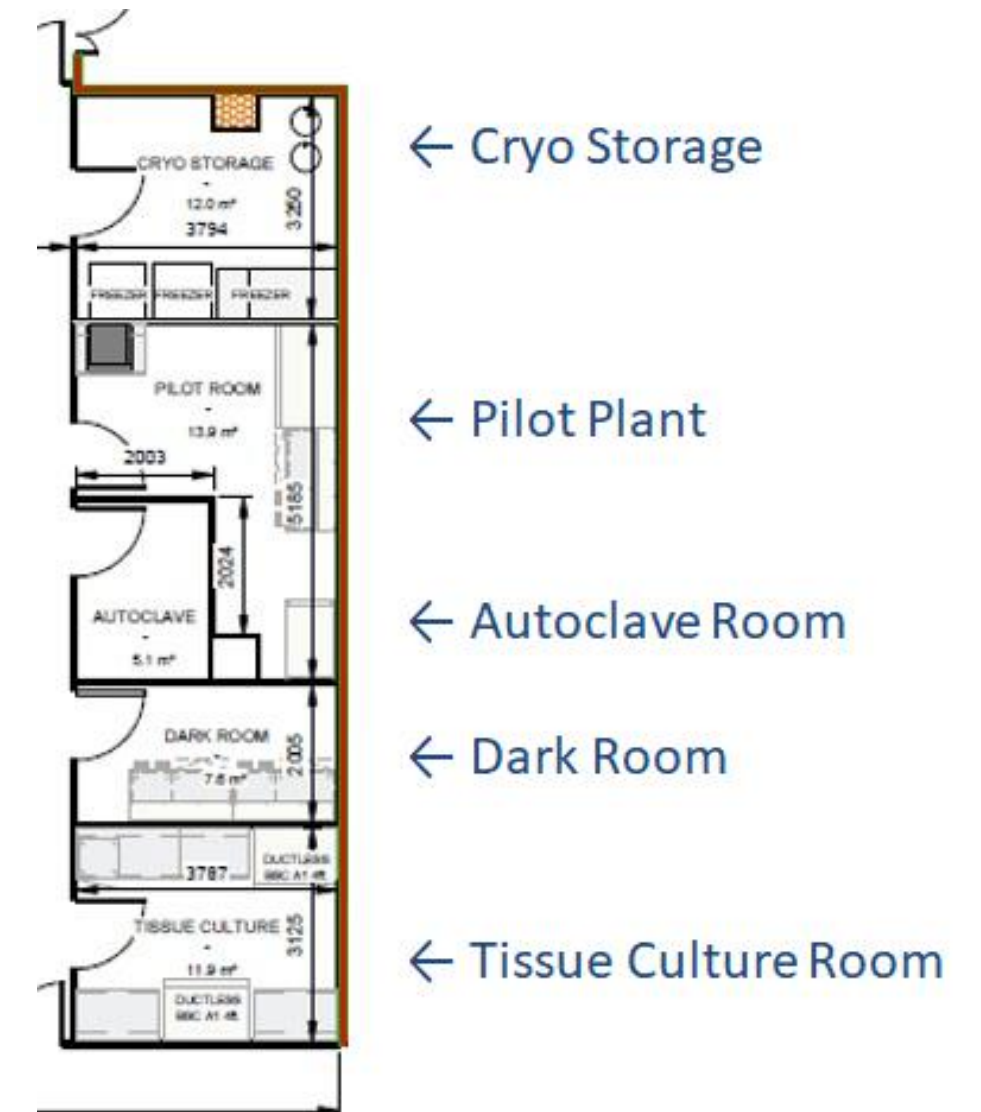
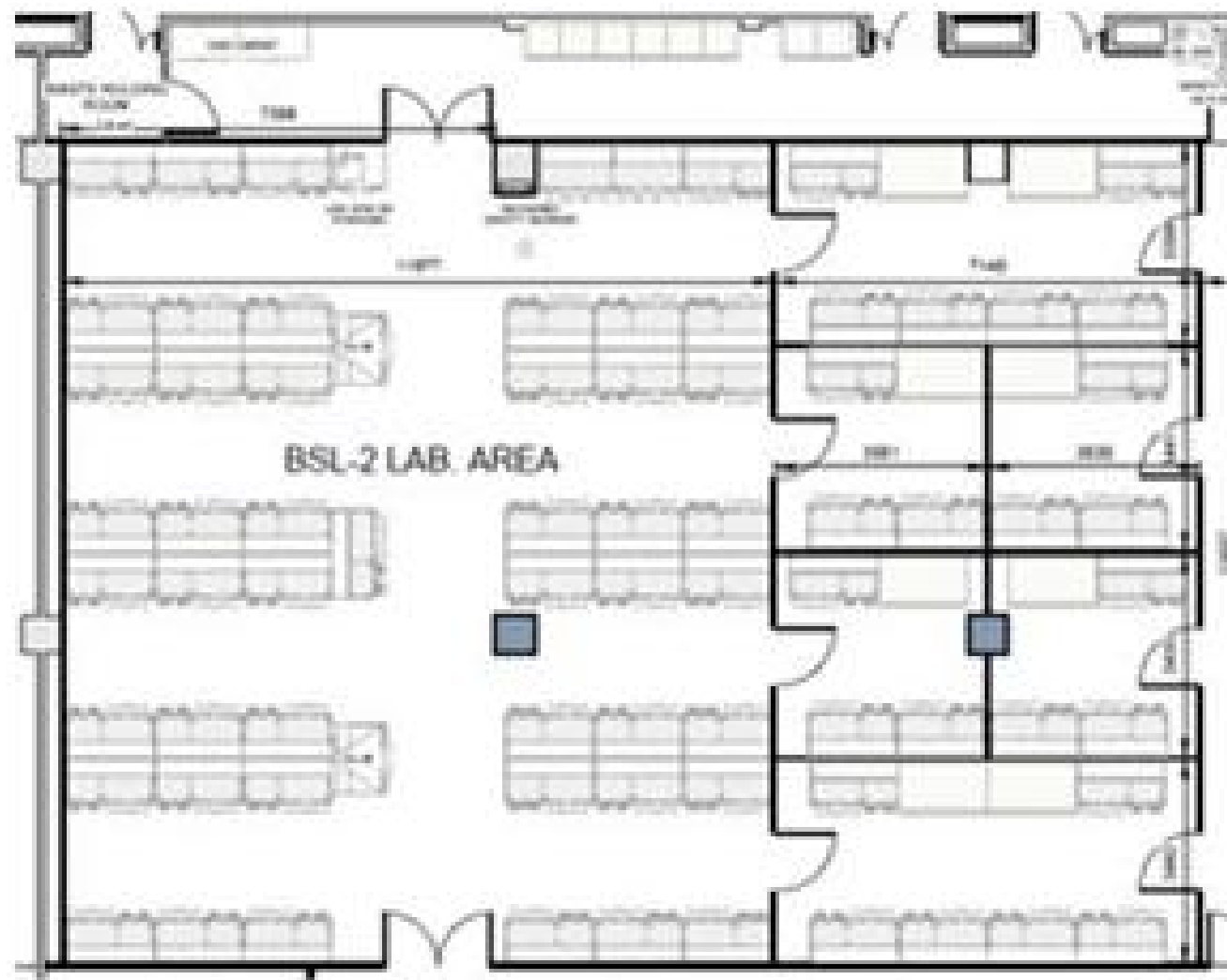


The LSI Operating Theatre will be available to book on flexible basis.

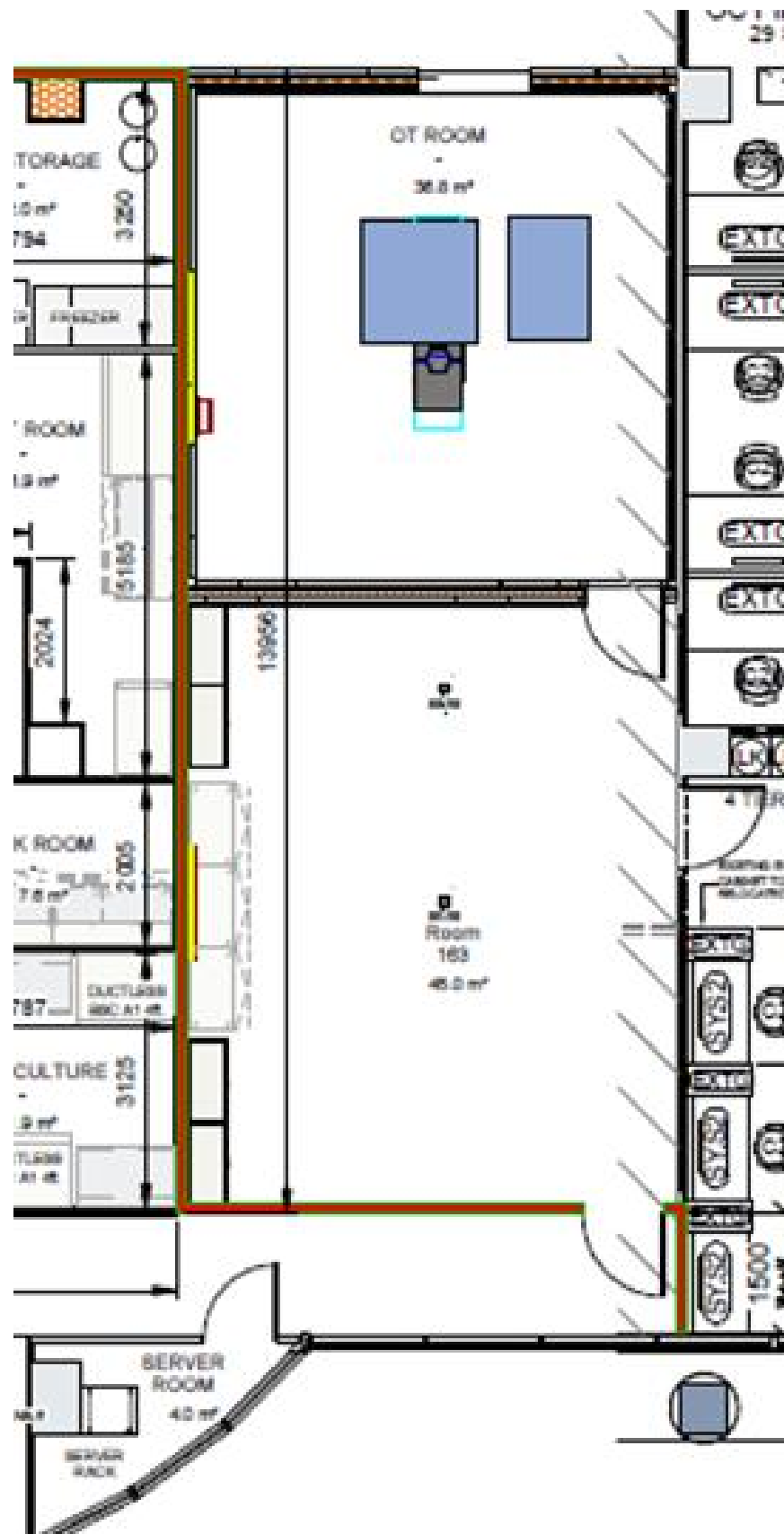
For **MedTech** and **Medical Devices** companies who want to conduct trainings or market validation exercises, this space will ease the challenge of availability and accessibility that they face in Singapore.



# WITH CO-WORKING LAB SPACE AND PRIVATE SUITES. SUPPORT ROOMS AVAILABLE TO ALL MEMBERS



# OPERATING THEATRE

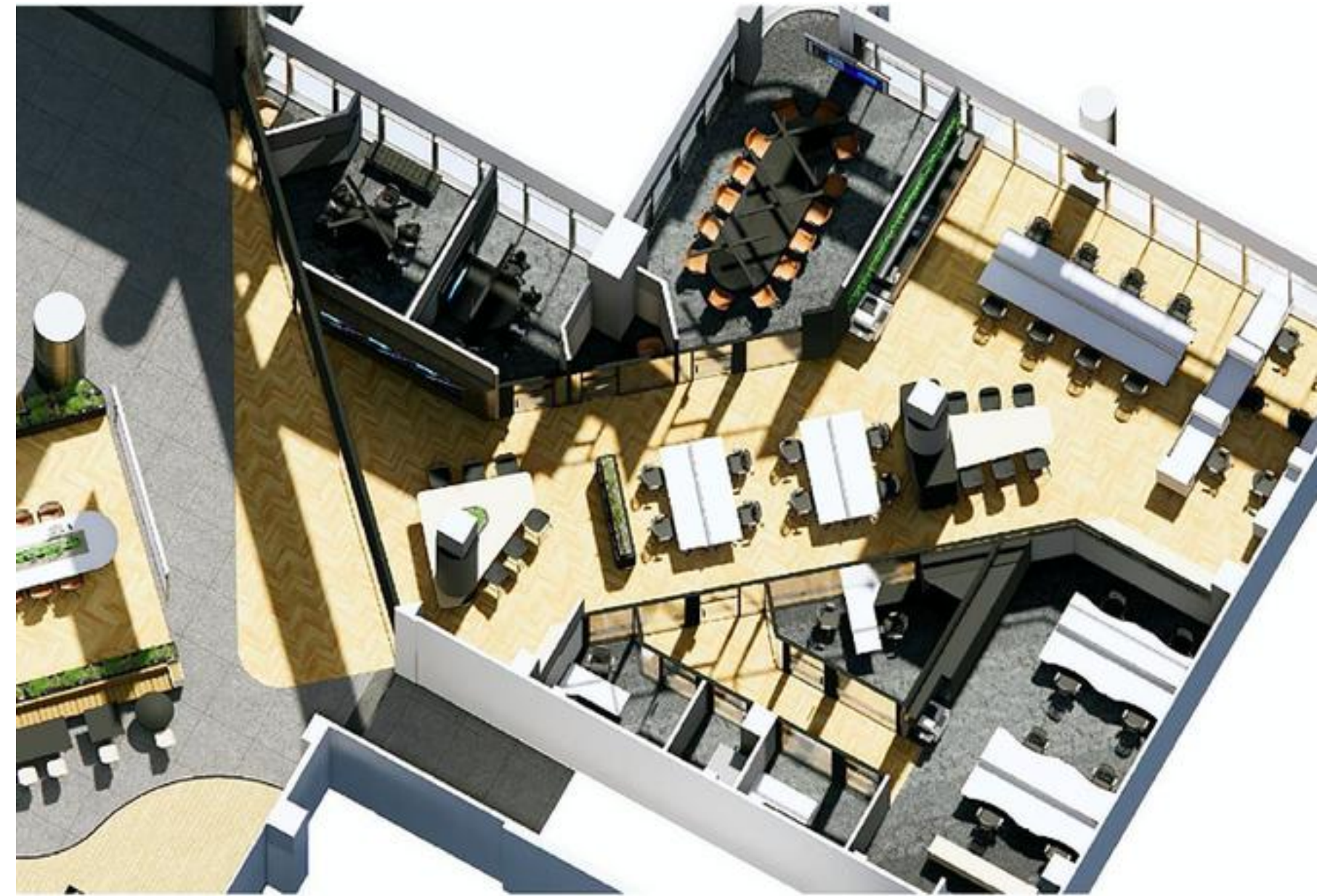




# LSI's facilities are complemented by the German Centre's modern co-working space

For the start-ups that incubate with LSI, the German Centre's bright, spacious and conveniently located co-working space will allow our members to rent a flexible or designated desk, to acquire a mailing address, and to utilize collaborative meeting spaces and rooms for all of their needs outside the lab.

Flexible Lab desks start at just \$450 per month



# Expected Demographic of Life Science Incubator Members



**Life  
Science  
Incubator**  
Space for Science



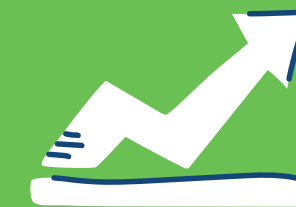
10-15 companies at  
any given time



With a major focus  
on Singaporean  
startups.



Spread across the  
Biotech, Pharma,  
Medtech and  
Foodtech industry



Pilot-scale production: We  
expect our members to go  
from basic to bulk



# Why Partner with Life Science Incubator?



**Marketing opportunities:** With increased visibility amongst members, other partners and the wider Life Science Community in SEA.



**Sales:** As the facility and its members evolve, our partners benefit from direct sales opportunities.



**Customer Relationship Building:** Pipeline creation and future acquisition of valuable customers.



**New Product Demonstration:** Using the facility as a living showroom, where new and cutting edge technology is trialed first-hand by a captive audience of researchers



**Open-door concept:** Our partners will be able to come on-site to bring internal and external stakeholders; to train, to demonstrate and to engage



**Innovative collaboration opportunities:** that further build visibility and show commitment to evolving the Life Science ecosystem.

Gold Sponsorship: €6300 Annual Contribution  
For EMCLAB Group Access - LSI can offer a  
preferential group rate of €5000 per company  
(minimum 5 companies)

**Just €415 euros a month**

## **And next steps...**



If those who initially begin with Gold Membership identify the opportunity to be valuable and valid, through the German Centre and the team at LSI, we can assist to look at a full-time sales representative that EMC could hire as a direct representative.

# How our **PARTNERSHIPS** look and work

Our Corporate Partners equip LSI's shared laboratory workspace with a variety of technology  
(while maintaining 100% ownership of the equipment)

LSI works closely with each partner to create and evolve the marketing and sales opportunities that each partner is focused on

LSI member companies use and engage with partner technologies, becoming brand loyal. As they grow and their needs develop, they become a direct customer of our partners

Partners continue to evolve and adapt how they work with us at LSI to accelerate their own strategies and KPIs - we are open to all ideas and are agile in how we partner



**Life  
Science  
Incubator**  
Space for Science



**Life  
Science  
Incubator**  
Space for Science

## For more information

contact us at [info@emclab.de](mailto:info@emclab.de)  
[niamh@lifescienceincubator.com](mailto:niamh@lifescienceincubator.com)